

# Briefing paper

## Under 18 conception rate in Hull – new data released for 2023

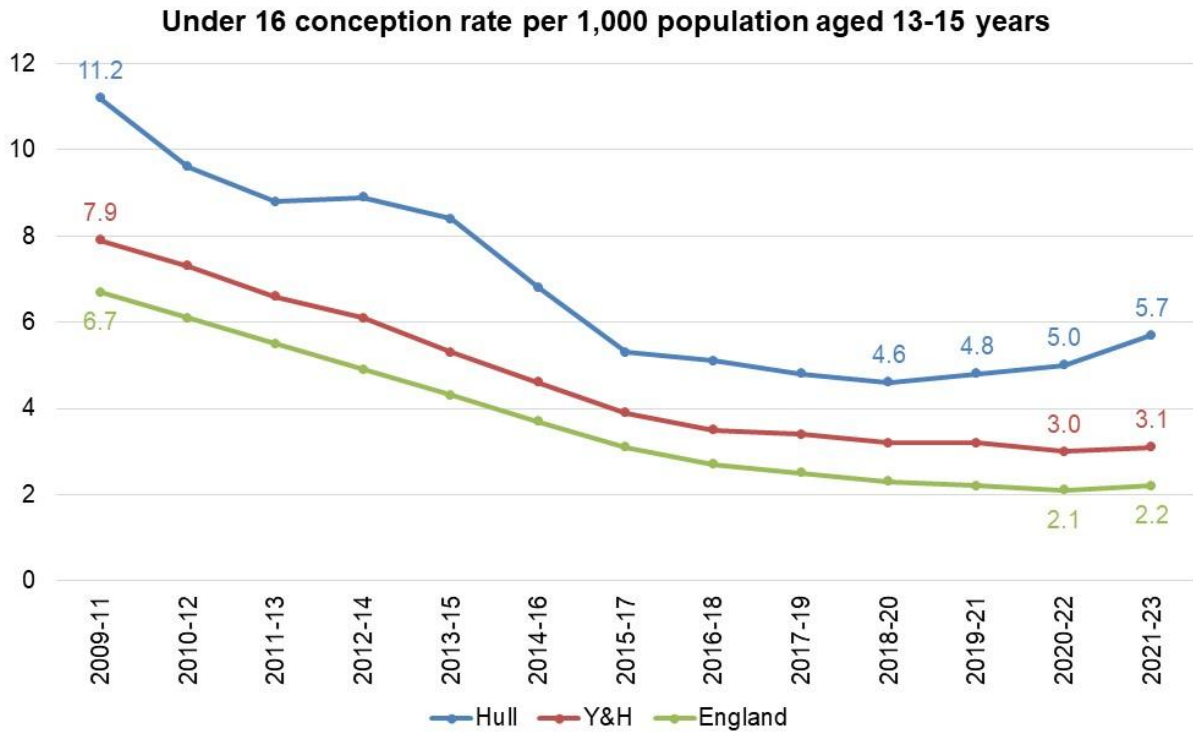
Public Health Intelligence  
Hull City Council  
30 June 2026

### Key points

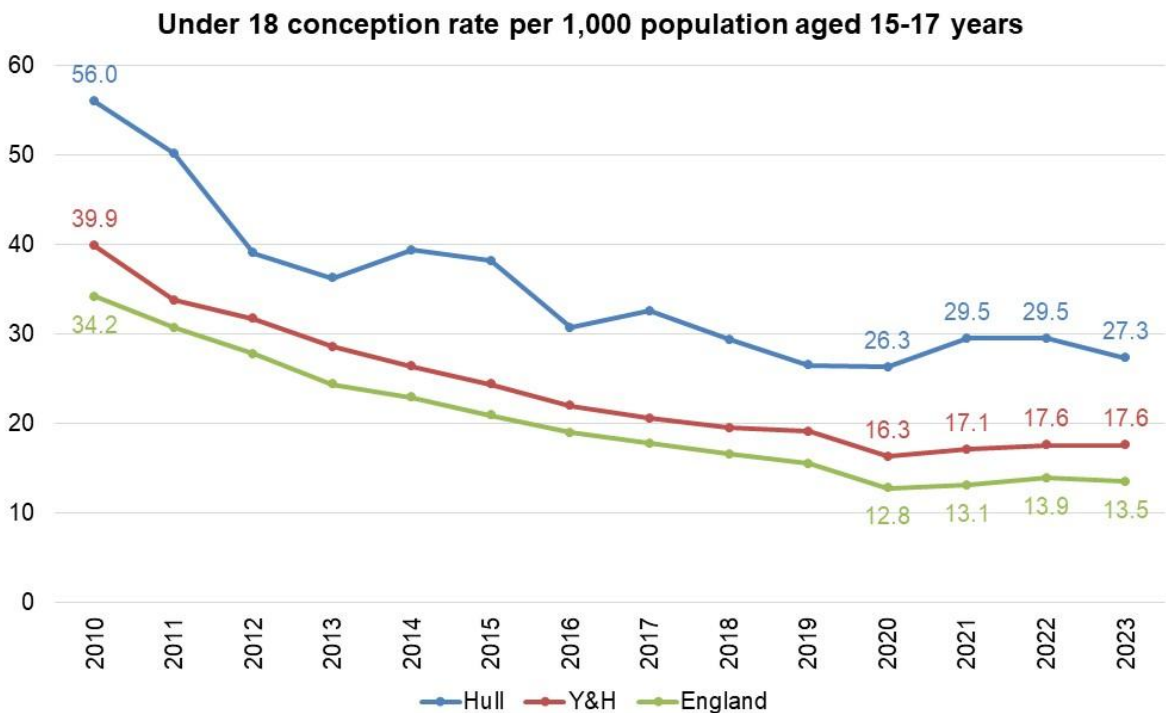
- **Data release**
  - New data released for conceptions occurring during 2023
  - Delayed data – normally released February/March 2025
- **Under 16 conceptions**
  - There were 85 under 16 conceptions during 2021-23 (almost 30 per year)
  - The rate has almost halved between 2009-11 and 2021-23
  - The rate has **increased in the last three years** in Hull
  - The rate is the **highest in England** of upper tier local authorities
  - The inequalities gap between Hull and England has increased in the 12 years
  - Fewer under 16 conceptions lead to an abortion
  - There were around 15 births per year among under 16s each year for 2021-23
- **Under 18 conceptions**
  - There were 135 under 18 conceptions during 2023
  - The rate has halved 2011 and 2023
  - The rate has **decreased in the last year** in Hull
  - The rate is the **fourth highest in England** of upper tier local authorities
  - The inequalities gap between Hull and England has increased in the 12 years
  - Fewer under 18 conceptions lead to an abortion
  - There were around 85 births per year among under 18s during 2023
- **Under 18 conception rates within Hull**
  - The highest under 18 conception rate occurs in Greatfield, Newland South, Southcoates West, and Chanterlands Avenue with rates exceeding 50 under 18 conceptions per 1,000 women aged 15-17 years.
  - Within Hull, the association with the under 18 conception rate and deprivation is not particularly strong, although there is a stronger association across England.

## Charts

### Under 16s – trends over time

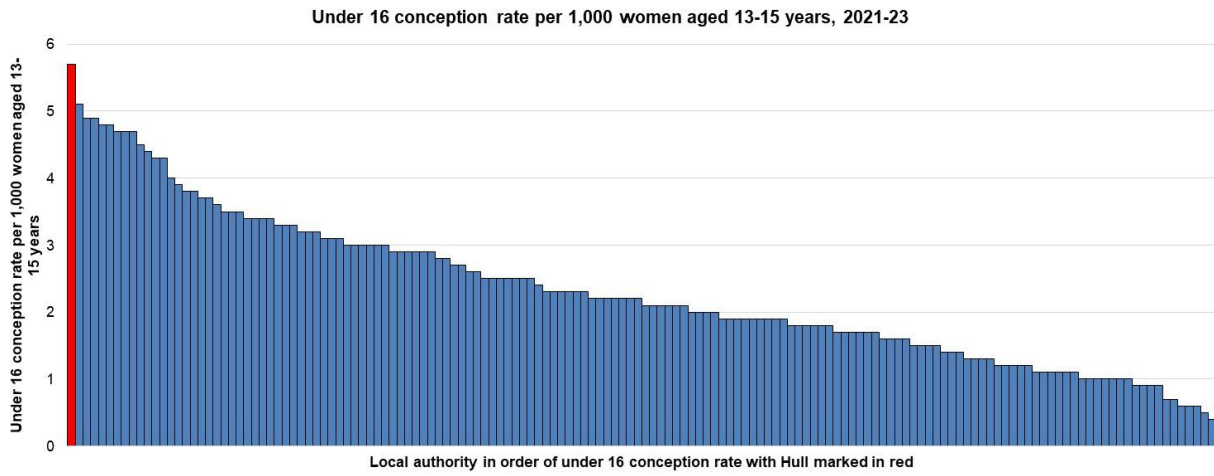


### Under 18s – trends over time

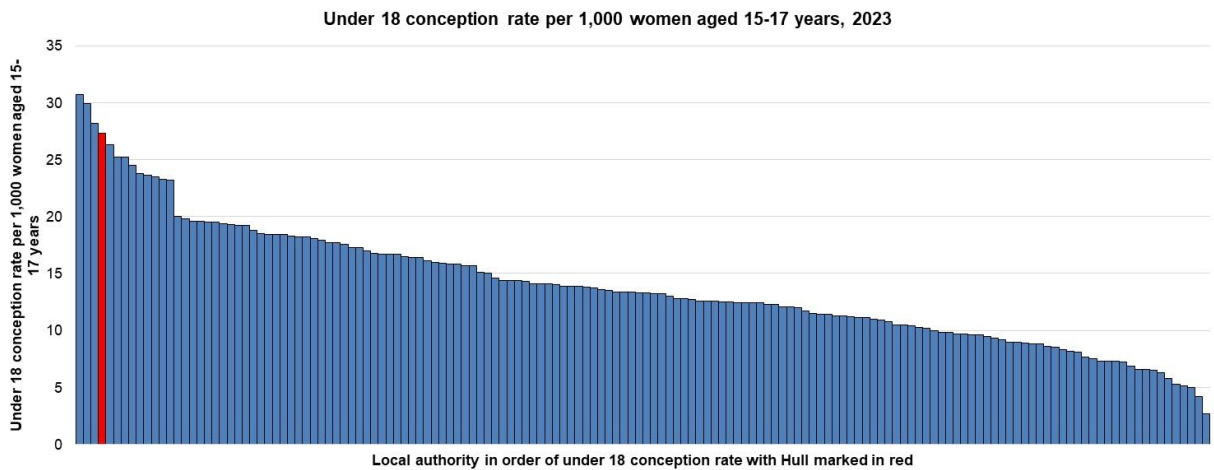


# Charts

## Under 16s – upper-tier local authority rankings (Hull in red)



## Under 18s – upper-tier local authority rankings (Hull in red)



## Under 16 conceptions

Whilst the under 16 conception rate has almost halved in Hull since 2009-11, the rate is more than twice as high as England and has increased in Hull over the last three years.

Between 2009-11 and 2021-23, the rate has decreased by 49% in Hull, but the percentage decreases have been greater across the region (61%) and England (67%). So the inequalities gap between Hull and England has increased over the last 12 years.

The under 16 conception rate ranges from 0.4 conceptions per 1,000 women aged 13-15 years to 5.7 conceptions per 1,000 women aged 13-15 years. Hull has the highest rate at 5.7 conceptions per 1,000 women aged 13-15 years in England. Blackpool is the only other local authority with a rate above five with a rate of 5.1 conceptions per 1,000 women aged 13-15 years.

The percentage of under 16 conceptions leading to an abortion is much lower in Hull. With approximately 47% abortions and 53% births, that would equate to around 45 births in total among under 16s for the three-year period 2021-23 so around 15 per year.

Period	Number of under 16 conceptions in Hull*	Under 16 conception rate per 1,000 women aged 13-15 years			Percentage of under 16 conceptions leading to an abortion		
		Hull	Y&H	England	Hull	Y&H	England
2009-11	150	11.2	7.9	6.7	56.7	58.3	61.1
2010-12	125	9.6	7.3	6.1	60.0	58.0	61.2
2011-13	110	8.8	6.6	5.5	54.5	56.6	60.7
2012-14	105	8.9	6.1	4.9	57.1	57.2	61.5
2013-15	95	8.4	5.3	4.3	57.9	56.2	61.6
2014-16	75	6.8	4.6	3.7	60.0	56.2	61.6
2015-17	60	5.3	3.9	3.1	66.7	53.7	60.6
2016-18	60	5.1	3.5	2.7	58.3	55.2	61.4
2017-19	60	4.8	3.4	2.5	50.0	56.9	61.6
2018-20	60	4.6	3.2	2.3	41.7	58.2	62.1
2019-21	65	4.8	3.2	2.2	46.2	55.8	61.6
2020-22	70	5.0	3.0	2.1	50.0	52.3	60.9
2021-23	85	5.7	3.1	2.2	47.1	52.5	62.4

\*Numbers in the national report are rounded to nearest 5.

## Under 18 conceptions

Whilst the under 18 conception rate has halved in Hull since 2010, the rate is more than twice as high as England. The rate increased between 2020 and 2022, but has decreased in the last year.

Between 2010 and 2023, the rate has decreased by 51% in Hull, but the percentage decreases have been greater across the region (56%) and England (61%). So the inequalities gap between Hull and England has increased over the last 13 years.

The under 18 conception rate ranges from 2.7 conceptions per 1,000 women aged 15-17 years to 30.7 conceptions per 1,000 women aged 15-17 years. Hull has the fifth highest rate at 27.3 conceptions per 1,000 women aged 15-17 years. Middlesbrough (30.7), North East Lincolnshire (29.9) and Blackpool (28.2) have higher under 18 conception rates compared to Hull.

The percentage of under 18 conceptions leading to an abortion is much lower in Hull. With approximately 37% abortions and 63% births, that would equate to around 85 births in total among under 18s for 2023.

Period	Number of under 18 conceptions in Hull*	Under 18 conception rate per 1,000 women aged 15-17 years			Percentage of under 18 conceptions leading to an abortion		
		Hull	Y&H	England	Hull	Y&H	England
2010	260	56.0	39.9	34.2	38.5	45.2	50.3
2011	230	50.2	33.8	30.7	34.8	42.4	49.3
2012	175	39.1	31.7	27.8	28.6	41.3	49.1
2013	160	36.3	28.6	24.4	34.4	45.0	51.1
2014	165	39.4	26.4	22.9	42.4	45.9	51.2
2015	150	38.2	24.4	20.9	43.3	43.3	51.2
2016	115	30.7	22.0	19.0	30.4	44.4	51.9
2017	120	32.6	20.6	17.8	37.5	43.9	52.0
2018	110	29.4	19.5	16.6	40.9	46.5	53.0
2019	105	26.5	19.1	15.5	33.3	47.8	54.7
2020	110	26.3	16.3	12.8	31.8	47.1	53.0
2021	130	29.5	17.1	13.1	26.9	44.7	53.4
2022	135	29.5	17.6	13.9	37.0	48.6	58.2
2023	135	27.3	17.6	13.5	37.0	54.3	61.5

\*Numbers in the national report are rounded to nearest 5.

## Under 18 conception rate within Hull

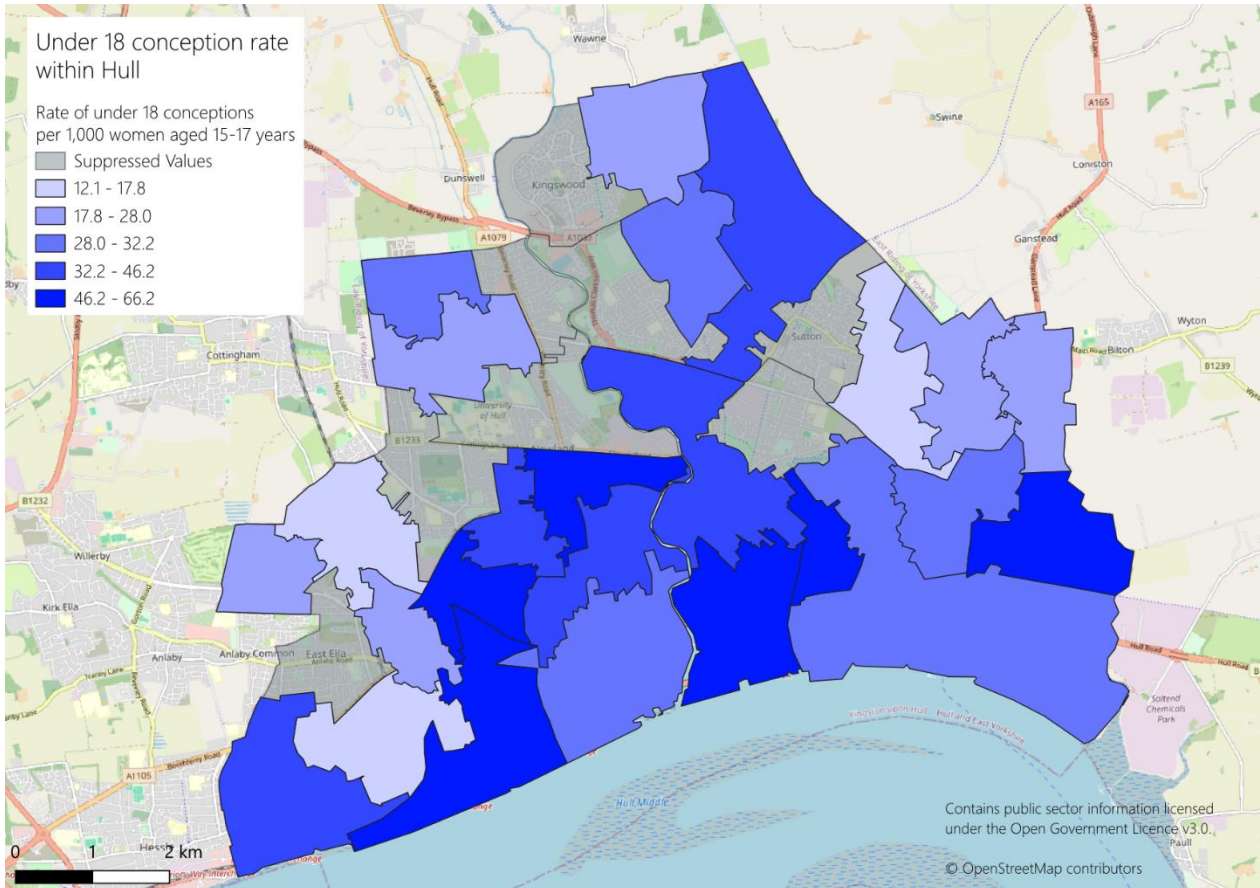
Information on the number and rate of under 18 conception rates are also given for Hull's 33 [middle layer super output area](#) geographical levels for 2021-23.

The table below shows the number of under 18 conceptions, and the rate of under 18 conceptions per 1,000 women aged 15-17 years with 95% [confidence intervals](#).

<b>MSOA code</b>	<b>MSOA name</b>	<b>Number of under 18 conceptions</b>	<b>Conceptions per 1,000 women aged 15-17 years (95% CI)</b>	<b>IMD25 score</b>
E02002672	Greatfield	27	66.2 (43.6, 96.3)	62.6
E02002666	Newland South	20	60.1 (36.7, 92.8)	41.3
E02002673	Southcoates West	20	53.2 (32.5, 82.2)	33.5
E02002676	Chanterlands Avenue	16	52.5 (30.0, 85.2)	32.4
E02002677	Drypool & Victoria Dock	15	47.8 (26.7, 78.8)	38.7
E02002681	Boulevard & St Andrew's Quay	29	47.8 (32.0, 68.6)	59.3
E02002669	Newland Avenues	19	43.1 (25.9, 67.3)	28.1
E02002675	Sculcoates	17	42.4 (24.7, 67.9)	60.2
E02002655	Bransholme East	24	40.3 (25.8, 60.0)	51.7
E02002667	Stoneferry & Sutton Fields	12	35.8 (18.5, 62.6)	24.7
E02006813	Anlaby Park & Pickering	14	33.9 (18.5, 56.9)	35.3
E02002668	Southcoates East	16	31.4 (18.0, 51.0)	63.6
E02002654	Orchard Park	19	29.7 (17.9, 46.4)	66.8
E02002680	Hull City Centre	8	29.6 (12.8, 58.4)	54.1
E02002671	Southcoates Central & Docks	13	28.2 (15.0, 48.2)	33.1
E02002653	Bransholme Central	14	28.1 (15.3, 47.1)	61.4
E02002678	Newington	12	28.0 (14.5, 48.9)	31.5
E02002661	Longhill	14	25.9 (14.2, 43.5)	37.9
E02007079	North Bransholme	14	25.9 (14.2, 43.5)	37.3
E02002674	Derringham	6	25.2 (9.3, 54.9)	21.4
E02002659	Greenwood	18	23.9 (14.2, 37.8)	52.0
E02002660	Bilton Grange	6	18.2 (6.7, 39.7)	42.3
E02002670	Bricknell West	8	17.1 (7.4, 33.8)	31.7
E02002682	Gipsyville	8	12.8 (5.5, 25.2)	41.3
E02002662	Ings	5	12.1 (3.9, 28.3)	31.6
E02002656	Haworth Park	*	*	13.8
E02002657	Bransholme West	*	*	20.2
E02002658	Sutton North	*	*	18.5
E02002663	University & Newland North	*	*	14.3
E02002664	Sutton South	*	*	7.8
E02002665	Bricknell East	*	*	15.5
E02002679	East Ella	*	*	21.3
E02007080	Kingswood	*	*	7.2

\*Numbers are 1-4 so suppressed for confidentiality reasons.

The following map illustrates the areas of the city with the highest under 18 conception rates for 2021-23. A reference map of the middle layer super output areas is also given below.

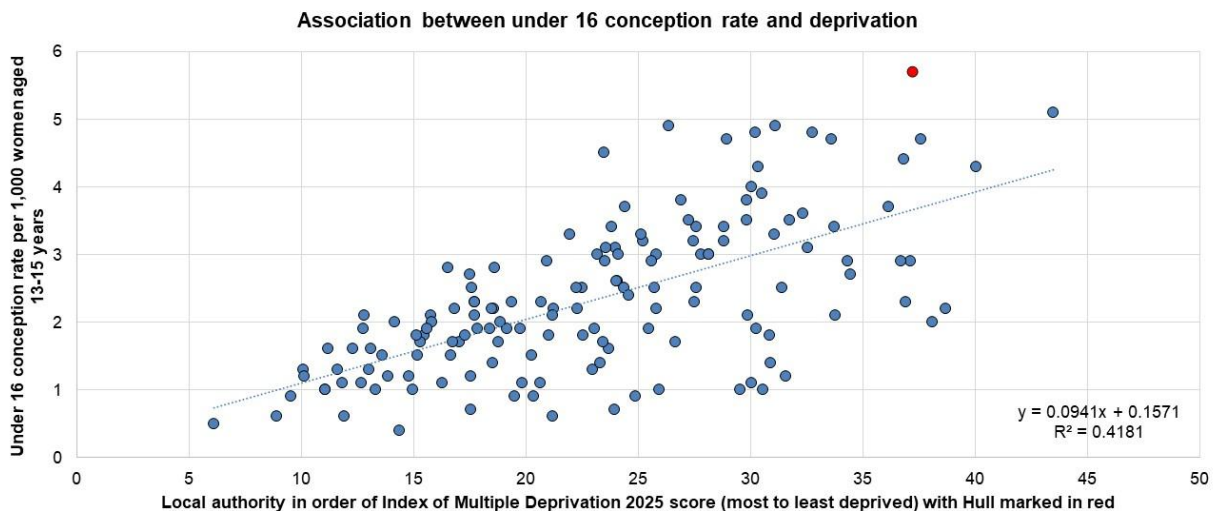


## Association between the conception rate and deprivation

Deprivation is measured using the [Index of Multiple Deprivation](#) 2025 with further information available on our Joint Strategic Needs Assessment at [Deprivation and Poverty](#)). Each area is assigned a score and the population-weighted score for each local authority can be calculated. Blackpool is the most deprived upper-tier local authority in England with a score of 43.5 and Wokingham is the least deprived upper-tier local authority in England with a score of 6.1. The population-weighted score for England is 21.8, and Hull is ranked as the sixth most deprived local authority in England with a score of 37.2.

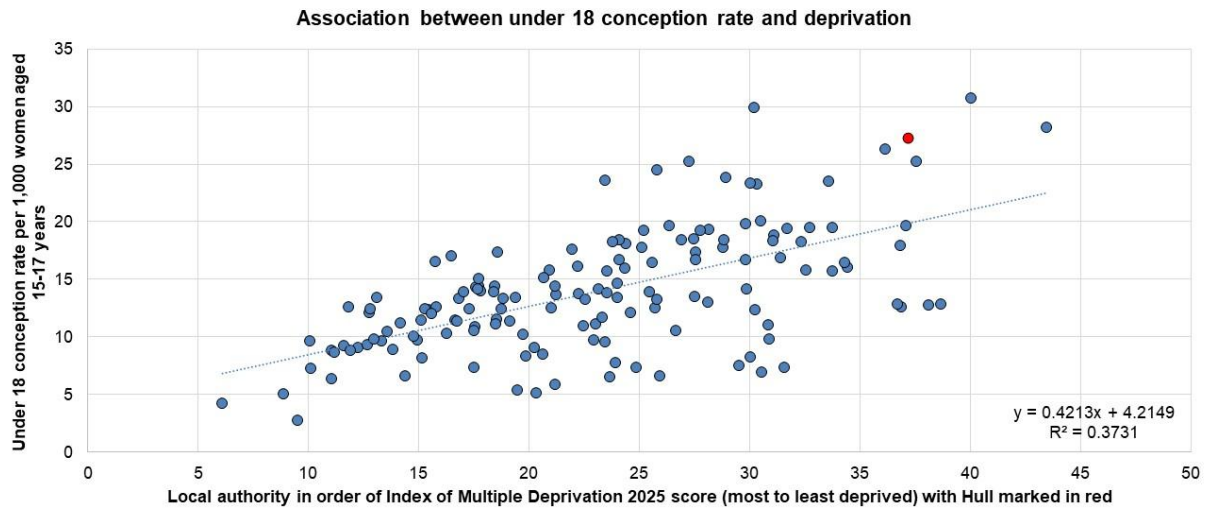
There is considerable variation but there is a clear association with the under 16 conception rate and deprivation for England. For every 10 unit increase in the deprivation score the under 16 conception rate is 0.9 percentage points higher.

## Under 16s – association with deprivation (upper-tier local authorities)



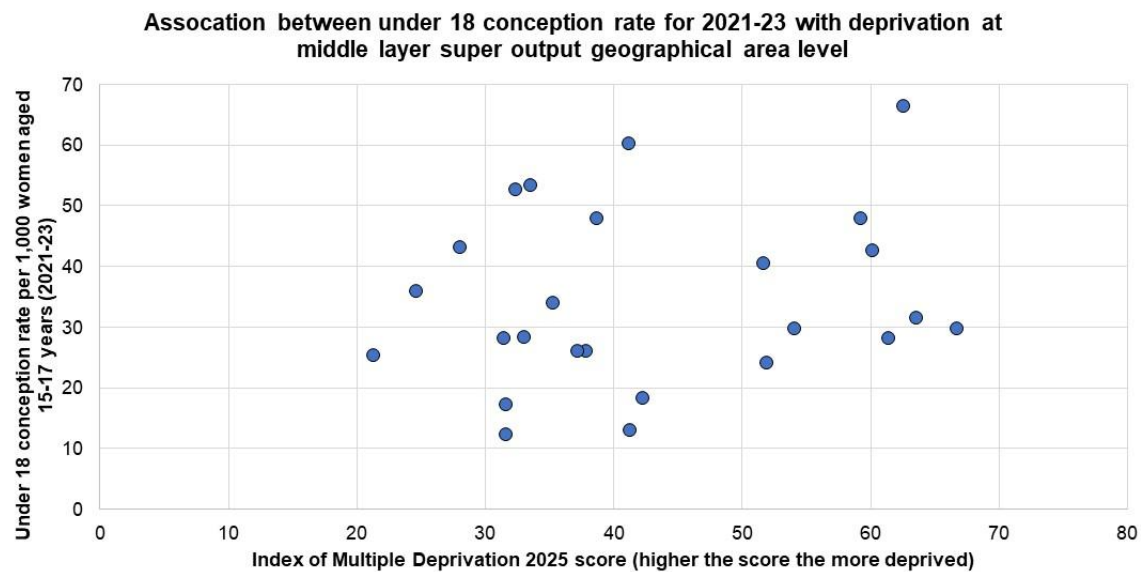
There is considerable variation but there is a clear association with the under 18 conception rate and deprivation for England. For every 10 unit increase in the deprivation score the under 18 conception rate is 4.2 percentage points higher.

### Under 18s – association with deprivation (upper-tier local authorities)



### Under 18s – association with deprivation (within Hull – MLSOAs)

There is no apparent strong association between the under 18 conception rate and deprivation within Hull across the 25 middle layer super output areas with data.



**For more information:**

[Hull Joint Strategic Needs Assessment](#)  
[Under 18 Conceptions](#)  
[publichealthintelligence@hullcc.gov.uk](mailto:publichealthintelligence@hullcc.gov.uk)